

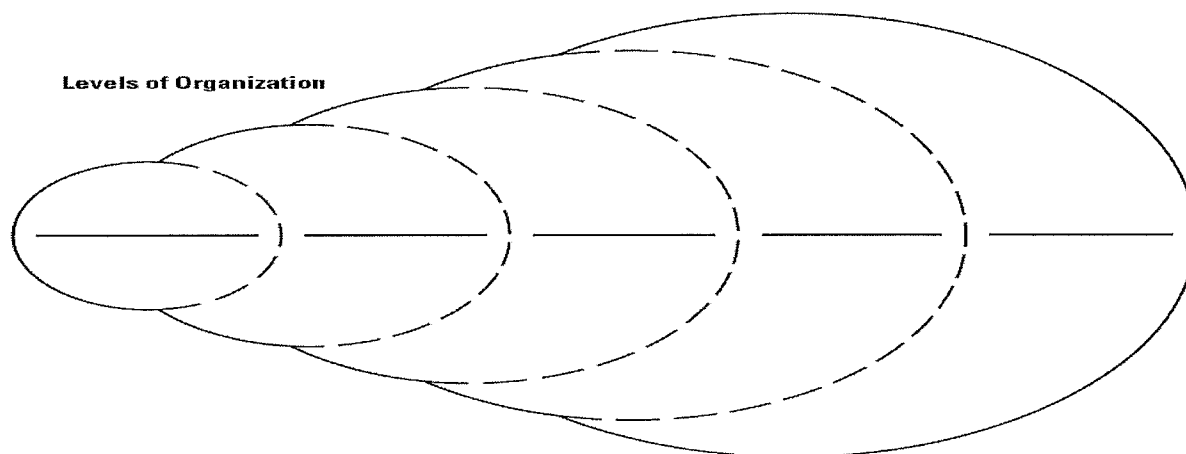
### Ecology Review Worksheet #1

**Main Idea: Ecologists study environments at different levels of organization.**

Write a description of each level of organization in the table. Also, provide an example for each level.

Level	Description	Example
1. Organism		
2. Population		
3. Community		
4. Ecosystem		
5. Biosphere		

Fill in the diagram below with the Levels of Organization studied in Ecology. Use the terms from the table above.



**Main Idea: An ecosystem includes both abiotic and biotic factors. Producers provide energy for other organisms in an ecosystem.**

Complete the following sentences with the correct term from the list below

autotrophs	eating	nonliving	abiotic	living	temperature	producers
moisture	plants	animals	biotic	consumers	heterotrophs	nonliving

6. All ecosystems are made up of \_\_\_\_\_ and \_\_\_\_\_ components.
7. \_\_\_\_\_ factors are living things, such as \_\_\_\_\_ or \_\_\_\_\_.
8. \_\_\_\_\_ factors are nonliving things, such as wind, \_\_\_\_\_, or \_\_\_\_\_.
9. \_\_\_\_\_ are organisms that get their energy from \_\_\_\_\_ resources, meaning they make their own food. These organisms are also called \_\_\_\_\_.
10. \_\_\_\_\_ are organisms that get their energy by \_\_\_\_\_ other organisms. These organisms are also called \_\_\_\_\_.

11. Why are producers so important to an ecosystem?

---

---

**KEY CONCEPT: Food chains and food webs model the flow of energy in an ecosystem.**

Choose the correct term from the box below to fit each description.

carnivore	herbivore	secondary consumer	decomposer	detritivore
omnivore	primary consumer	tertiary consumer	trophic levels	

12. I eat only plants. I am a(n) \_\_\_\_\_.

13. I eat only other animals. I am a(n) \_\_\_\_\_.

14. I eat both plants and animals. I am a(n) \_\_\_\_\_.

15. I eat dead organic matter. I am a(n) \_\_\_\_\_.

16. I break down organic matter into simpler compounds. I am a(n) \_\_\_\_\_.

17. I am the first consumer above the producer level. I am a(n) \_\_\_\_\_.

18. I am a carnivore that eats herbivores. I am a(n) \_\_\_\_\_.

19. I am a carnivore that eats other carnivores. I am a(n) \_\_\_\_\_.

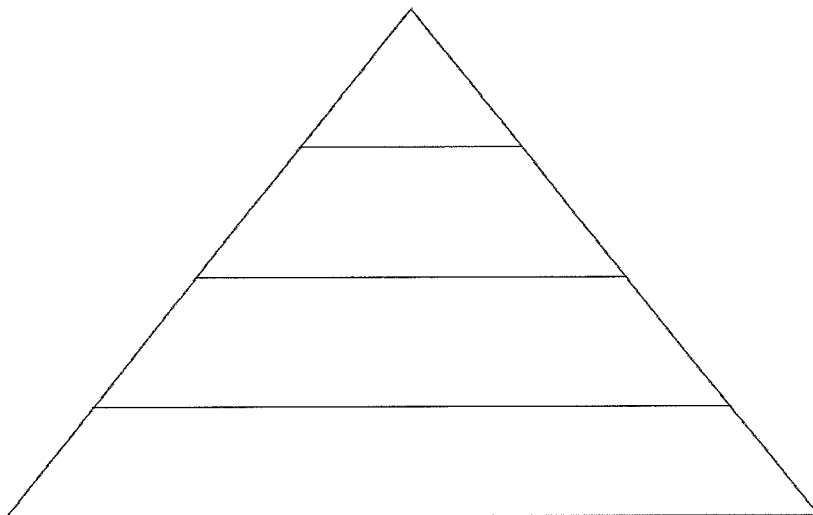
20. The levels of nourishment in a food chain are called \_\_\_\_\_.

21. How is a food web different from a food chain?

---

---

22. Label the four tiers of the energy pyramid with the correct trophic level (producers, primary consumers, secondary consumers, and tertiary consumers). Choose an ecosystem. Fill in the energy pyramid with what might exist within that ecosystem.



# Biomes of North America

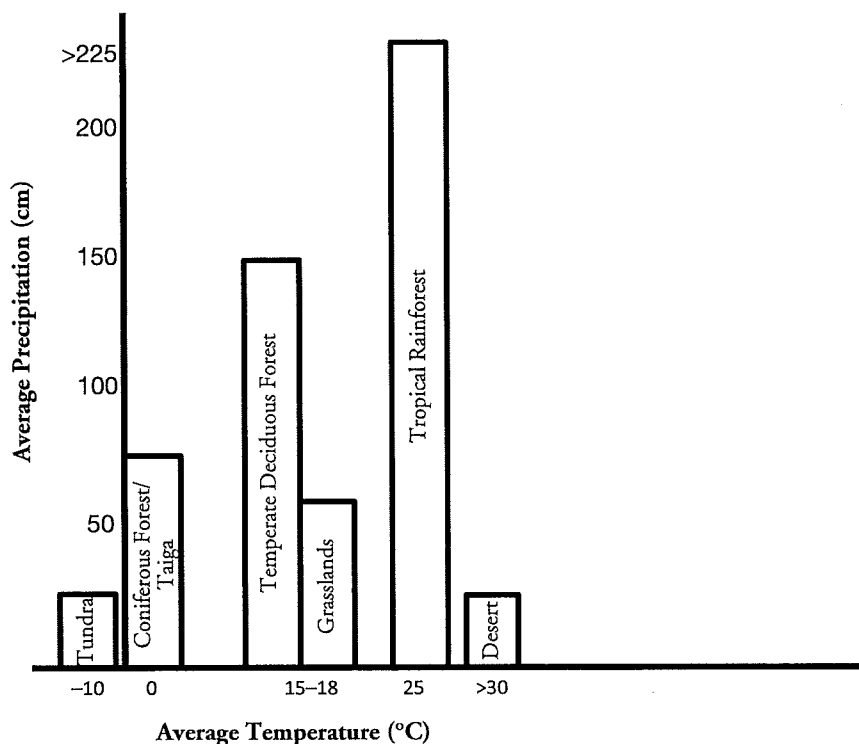
How do temperature and precipitation affect the distribution of plants and animals?

## Why?

Have you ever wondered why no polar bears are in California, or cacti in Alaska? The amount of precipitation and the temperature varies tremendously across North America, resulting in well-defined community boundaries or **biomes** that are suitable for some populations but not for others.

## Model 1 – Biomes of North America

### Average Precipitation and Temperature



1. According to Model 1, which two biomes have the same amount of rainfall?
2. Which biome in Model 1 has the most rainfall?
3. Which biome has the highest average temperature?
4. Which two biomes have nearly the same average temperature?

